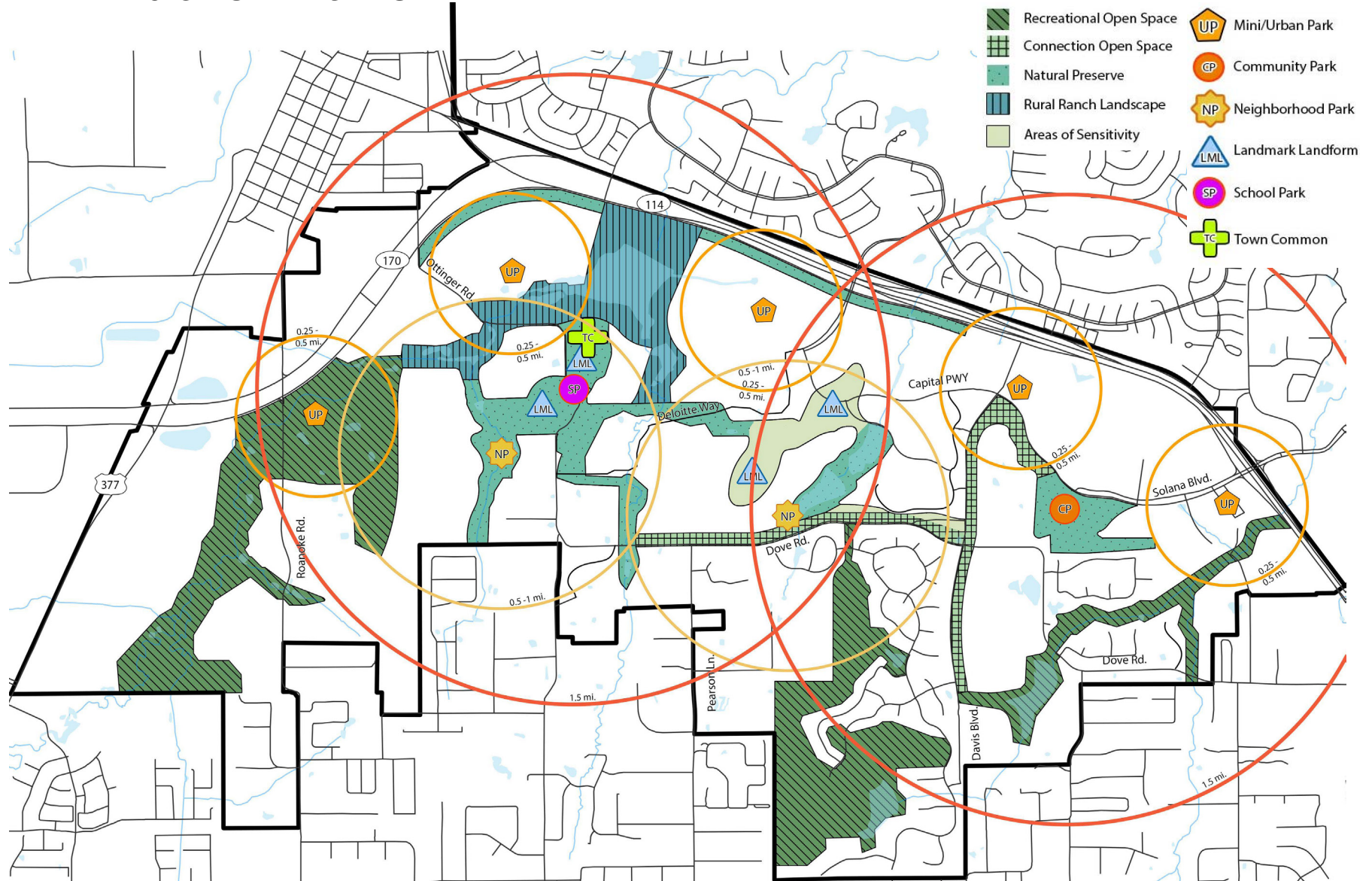


THE PARKS & OPEN SPACE PLAN



DISCLAIMER: The open space configuration and land area thereof, shown on the Parks and Open Space Plan in no way modifies the open space illustrated by any approved PD Plan or represented by the language/standards of any PD Ordinance. In addition, the open space shown may be either public or private and an open space may not be available to public use or access. This open space configuration and land area is meant to be a guide to the Council in their review of development site plans submitted for their approval, requests by any property owner to amend/ revise any PD plan or PD Ordinance language, request a change of zoning, and/or requests to transfer commercial square footage from one land use district to another are submitted for Council approval (when the legal mechanism for such transfer has been adopted by the Town of Westlake). See Section C of the Implementation Plan for trigger points and other policy related information.

The recreation and park facilities shown on the Parks and Open Space Plan in no way modifies the language of any approved PD Plan or Ordinance. The location of a public recreation or park facility is to be determined through a cooperative Town/ property owner process which takes place as site plans, requests for amendment of any existing Planned Development Ordinance, a request for rezoning, and/or requests to transfer commercial square footage from one land use district to another are submitted for Council approval (when the legal mechanism for such transfer has been adopted by the Town of Westlake). See Section C of the Implementation Plan for trigger points and other policy related information.