



**TOWN OF WESTLAKE
GPS CONTROL MONUMENTS 1-10**

**TOWN OF WESTLAKE
GPS MONUMENT NO. 1**

September 22, 1999

NAD 1983 (H.A.R.N. 1993) POSITION

Latitude: 32° 58' 16.59982" N
Longitude: 97° 10' 42.52797" W

TEXAS GRID COORDINATES - North Central Zone (4202)

Coordinates in Meters

Northing: 2145444.809
Easting: 723521.420

Coordinates in Feet

Northing: 7038846.84
Easting: 2373753.19

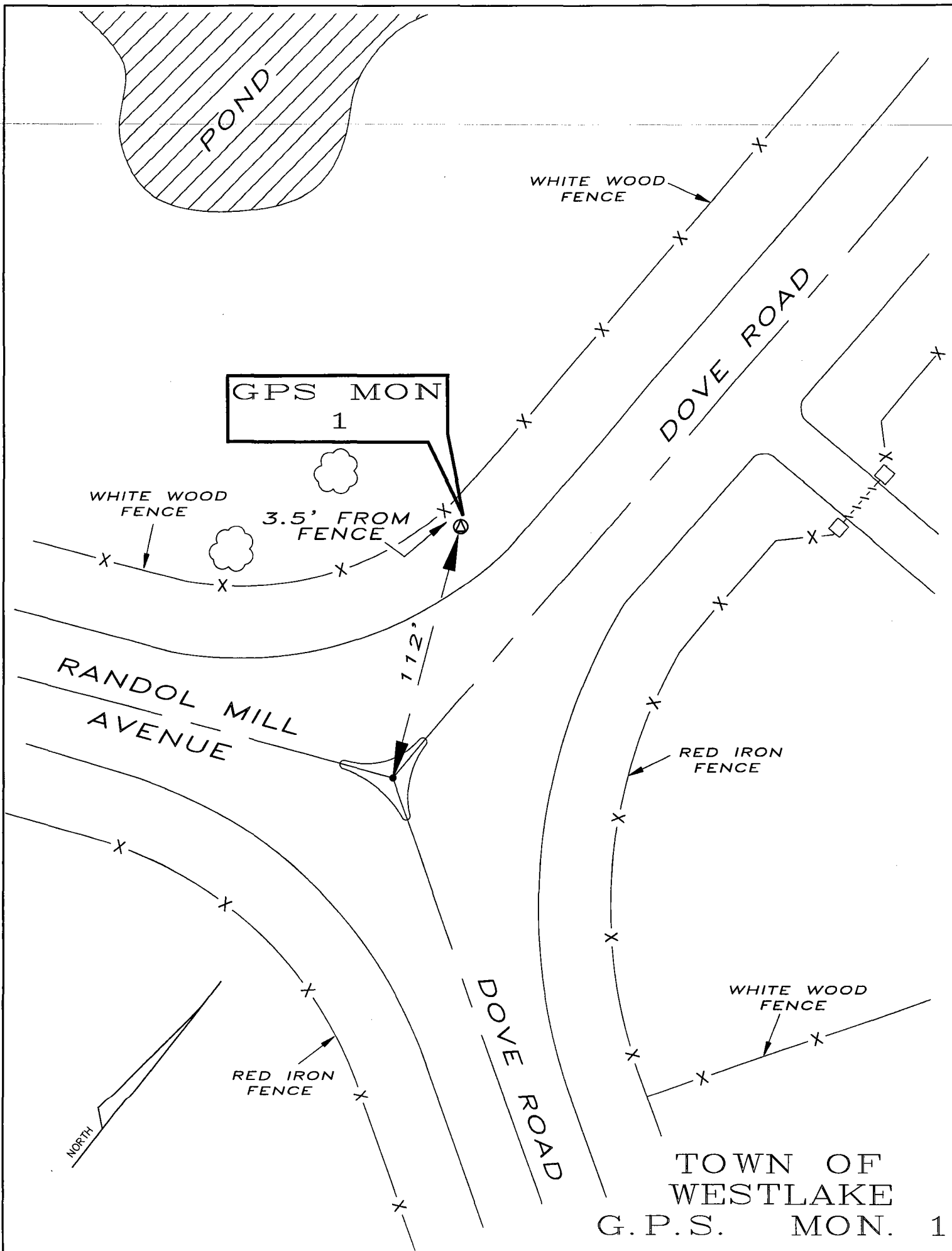
Convergence: 0° 43' 14.69867"
Scale Factor: 0.999873601

Vertical Datum N.A.V.D. 1988

Elevation in Feet: 619.86
Elevation in Meters: 188.933
Ellipsoidal Height in Meters: 161.556
Geoidal Height in Meters: 27.377

Station Description:

The Station is a Top Security rod monument with 3 1/4" aluminum cap stamped "TOWN OF WESTLAKE GPS 1" set in well with an aluminum access cover set flush with ground.



POND

WHITE WOOD FENCE

GPS MON
1

WHITE WOOD FENCE

3.5' FROM FENCE

DOVE ROAD

RANDOL MILL AVENUE

RED IRON FENCE

DOVE ROAD

WHITE WOOD FENCE

NORTH

RED IRON FENCE

TOWN OF WESTLAKE
G.P.S. MON. 1

112°

**TOWN OF WESTLAKE
GPS MONUMENT NO. 2**

September 22, 1999

NAD 1983 (H.A.R.N. 1993) POSITION

Latitude: 32° 58' 7.61150" N
Longitude: 97° 12' 9.97931" W

TEXAS GRID COORDINATES - North Central Zone (4202)

Coordinates in Meters

Northing: 2145139.665
Easting: 721254.398

Coordinates in Feet

Northing: 7037845.72
Easting: 2366315.47

Convergence: 0° 42' 27.00319"
Scale Factor: 0.999873662

Vertical Datum N.A.V.D. 1988

Elevation in Feet: 688.31
Elevation in Meters: 209.797
Ellipsoidal Height in Meters: 182.366
Geoidal Height in Meters: 27.431

Station Description:

The Station is a Top Security rod monument with 3 1/4" aluminum cap stamped "TOWN OF WESTLAKE GPS 2" set in well with an aluminum access cover set flush with ground.

NORTH

DITCH/SWAG

PEARSON LANE (ASPHALT)

BRICK INLAYED CONC. DRIVEWAY

FIRE HYDRANT

271'

DITCH/SWAG

ASPHALT DRIVEWAY

GPS MON
2

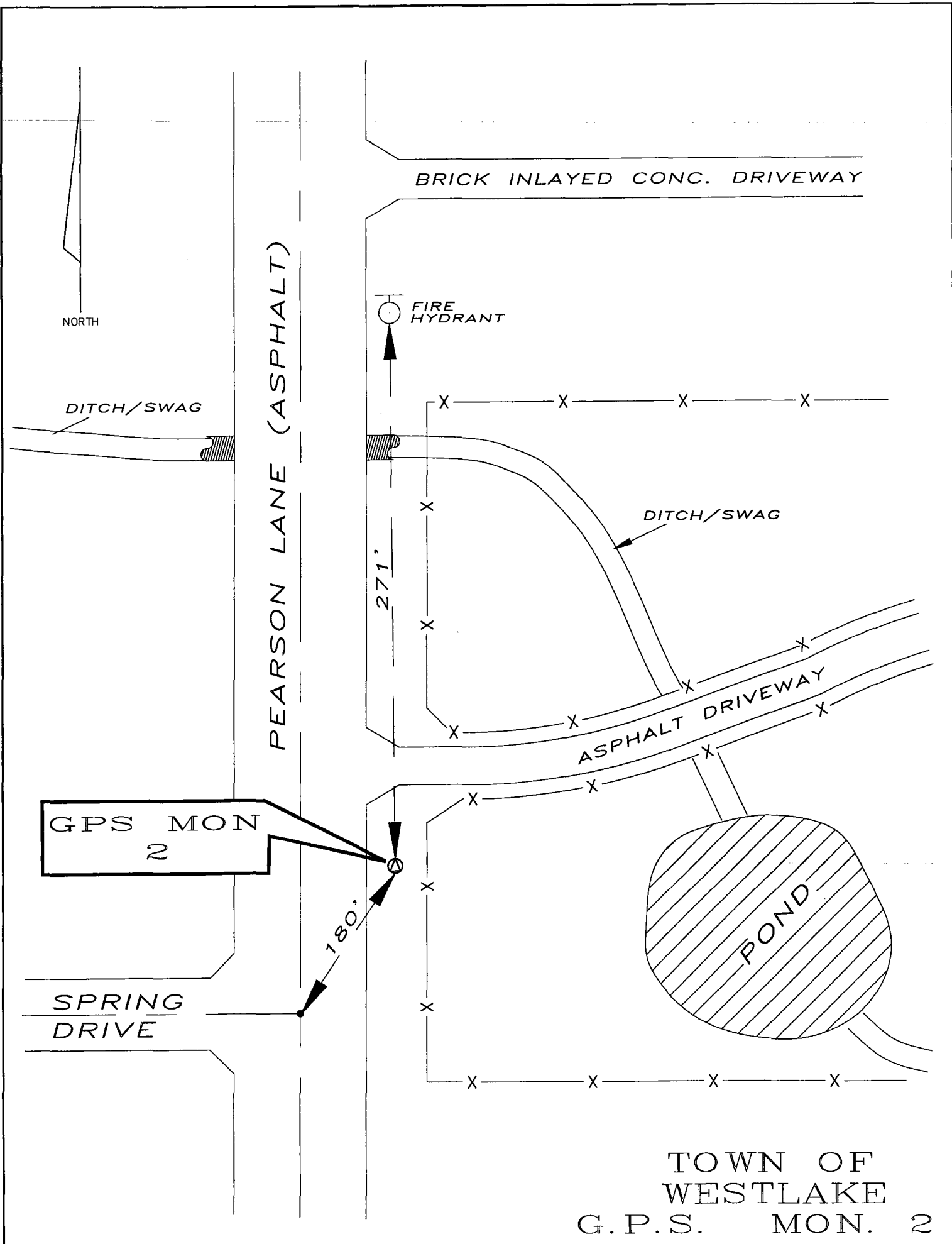
180'

SPRING
DRIVE

POND

TOWN OF
WESTLAKE

G.P.S. MON. 2



**TOWN OF WESTLAKE
GPS MONUMENT NO. 3**

September 22, 1999

NAD 1983 (H.A.R.N. 1993) POSITION

Latitude: 32° 58' 1.07423" N
Longitude: 97° 13' 46.55126" W

TEXAS GRID COORDINATES - North Central Zone (4202)

Coordinates in Meters

Northing: 2144907.672
Easting: 718749.521

Coordinates in Feet

Northing: 7037084.59
Easting: 2358097.39

Convergence: 0° 41' 34.33339"
Scale Factor: 0.999873709

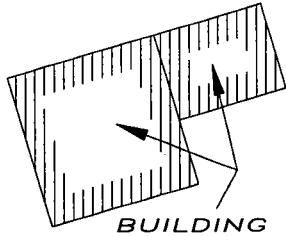
Vertical Datum N.A.V.D. 1988

Elevation in Feet: 703.59
Elevation in Meters: 214.454
Ellipsoidal Height in Meters: 186.962
Geoidal Height in Meters: 27.492

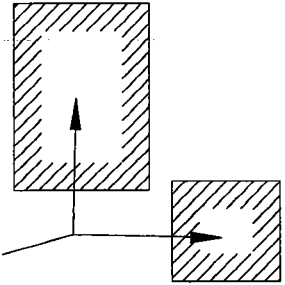
Station Description:

The Station is a Top Security rod monument with 3 1/4" aluminum cap stamped "TOWN OF WESTLAKE GPS 3" set in well with an aluminum access cover set flush with ground.

NORTH



BUILDING



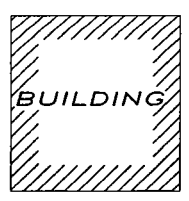
THORTON DRIVE

METAL FENCE
CORNER POST



17' FROM EDGE OF
PAVEMENT

STAGE COACH CIRCLE



TOWN OF
WESTLAKE
G.P.S. MON. 3

**TOWN OF WESTLAKE
GPS MONUMENT NO. 4**

September 22, 1999

NAD 1983 (H.A.R.N. 1993) POSITION

Latitude: 32° 58' 28.61721" N
Longitude: 97° 14' 37.90157" W

TEXAS GRID COORDINATES - North Central Zone (4202)

Coordinates in Meters

Northing: 2145739.978
Easting: 717406.131

Coordinates in Feet

Northing: 7039815.24
Easting: 2353689.95

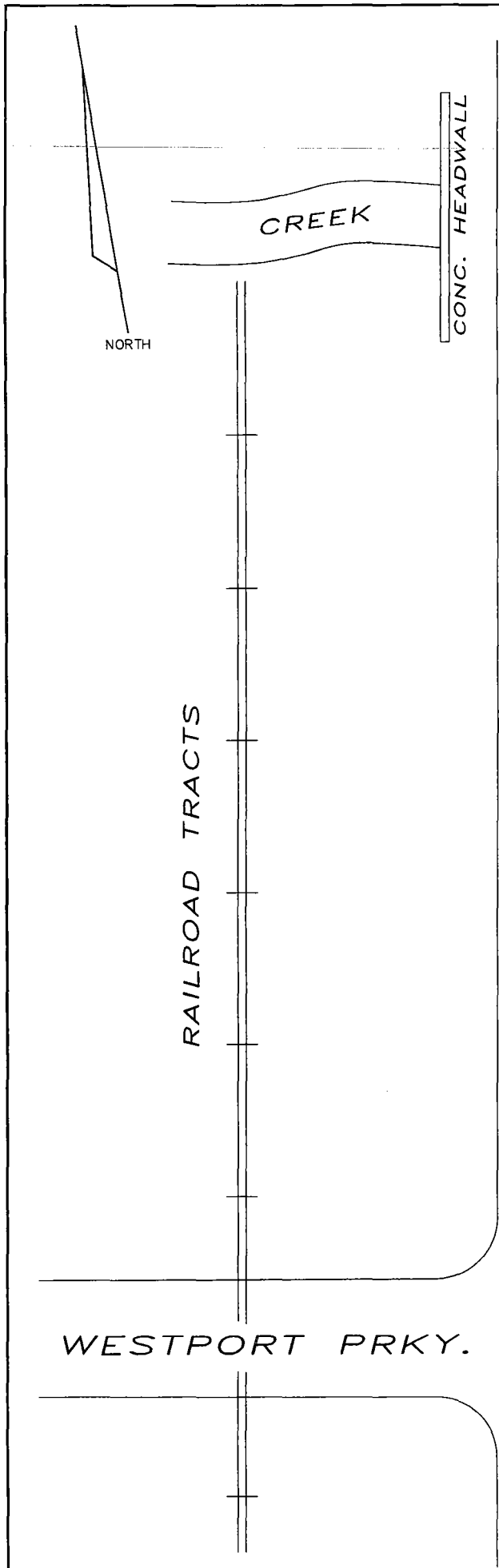
Convergence: 0° 41' 6.32722"
Scale Factor: 0.999873521

Vertical Datum N.A.V.D. 1988

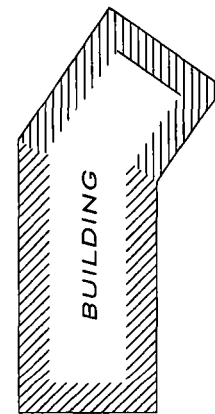
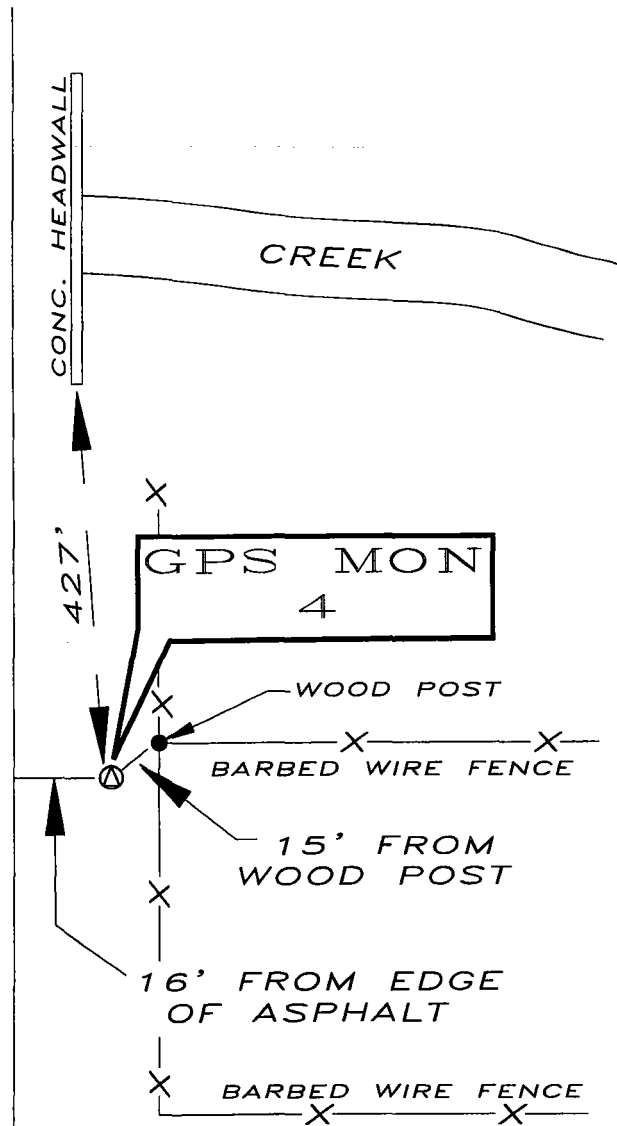
Elevation in Feet: 674.92
Elevation in Meters: 205.715
Ellipsoidal Height in Meters: 178.197
Geoidal Height in Meters: 27.518

Station Description:

The Station is a Top Security rod monument with 3 1/4" aluminum cap stamped "TOWN OF WESTLAKE GPS 4" set in well with an aluminum access cover set flush with ground.



HIGHWAY 377 (ASPHALT)



TOWN OF WESTLAKE

G.P.S. MON. 4

**TOWN OF WESTLAKE
GPS MONUMENT NO. 5**

September 22, 1999

NAD 1983 (H.A.R.N. 1993) POSITION

Latitude: 32° 59' 2.76195" N
Longitude: 97° 14' 13.25775" W

TEXAS GRID COORDINATES - North Central Zone (4202)

Coordinates in Meters

Northing: 2146799.326
Easting: 718033.277

Coordinates in Feet

Northing: 7043290.79
Easting: 2355747.51

Convergence: 0° 41' 19.76782"
Scale Factor: 0.999873313

Vertical Datum N.A.V.D. 1988

Elevation in Feet: 662.20
Elevation in Meters: 201.839
Ellipsoidal Height in Meters: 174.341
Geoidal Height in Meters: 27.498

Station Description:

The Station is a Top Security rod monument with 3 1/4" aluminum cap stamped "TOWN OF WESTLAKE GPS 5" set in well with an aluminum access cover set flush with ground.

NORTH

ACCESS ROAD
(FUTURE HIGHWAY
170)

ACCESS ROAD
(FUTURE HIGHWAY
170)

RAILROAD TRACTS

HIGHWAY 377 (ASPHALT)

43' FROM EDGE
OF ASPHALT

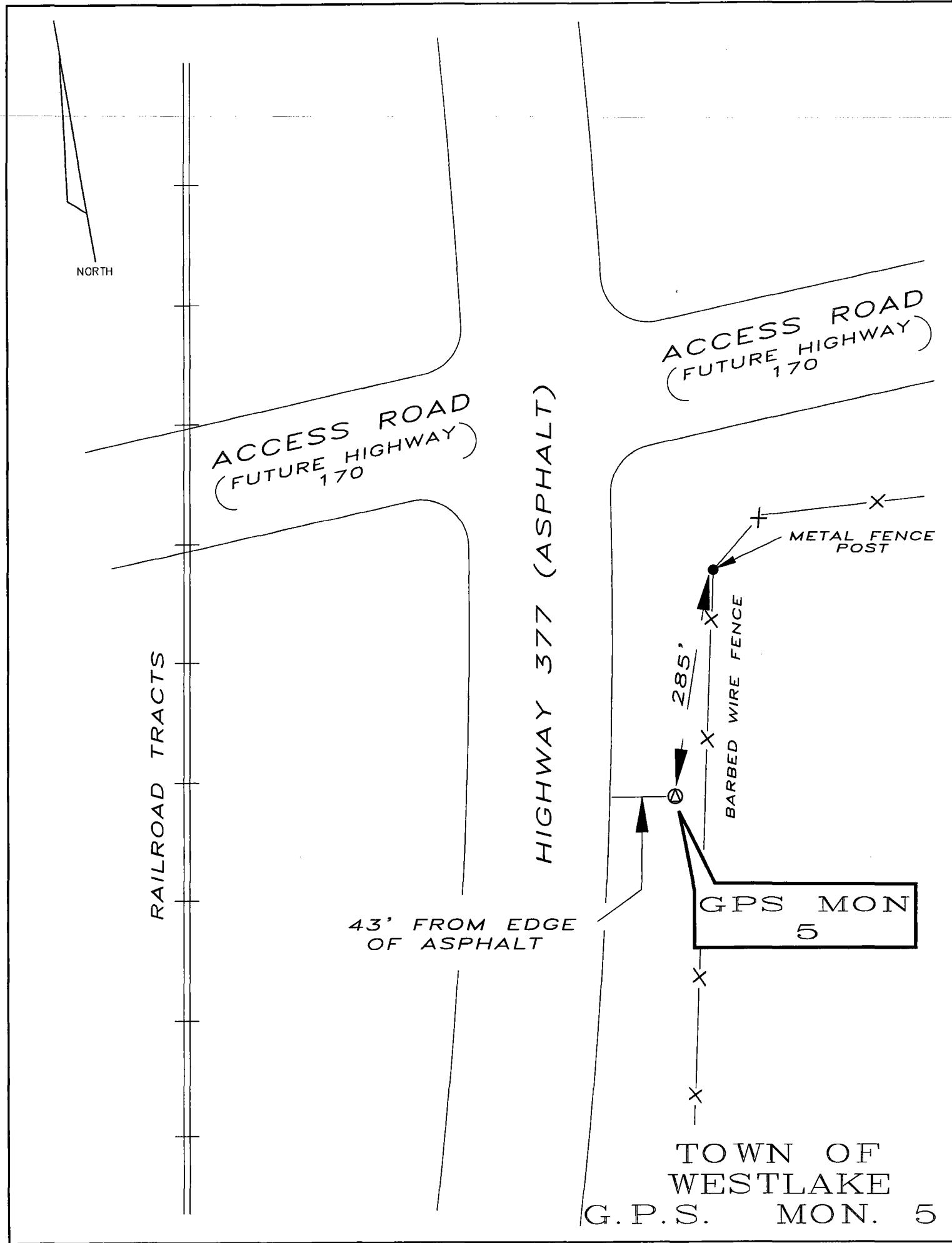
285'
BARBED WIRE FENCE

METAL FENCE
POST

GPS MON
5

TOWN OF
WESTLAKE

G.P.S. MON. 5



**TOWN OF WESTLAKE
GPS MONUMENT NO. 6**

September 22, 1999

NAD 1983 (H.A.R.N. 1993) POSITION

Latitude: 32° 59' 1.05152" N
Longitude: 97° 13' 43.50779" W

TEXAS GRID COORDINATES - North Central Zone (4202)

Coordinates in Meters

Northing: 2146755.959
Easting: 718806.185

Coordinates in Feet

Northing: 7043148.51
Easting: 2358283.29

Convergence: 0° 41' 35.99328"
Scale Factor: 0.999873323

Vertical Datum N.A.V.D. 1988

Elevation in Feet: 652.10
Elevation in Meters: 198.762
Ellipsoidal Height in Meters: 171.282
Geoidal Height in Meters: 27.480

Station Description:

The Station is a Top Security rod monument with 3 1/4" aluminum cap stamped "TOWN OF WESTLAKE GPS 6" set in well with an aluminum access cover set flush with ground.



ACCESS ROAD
FUTURE HIGHWAY
170

ACCESS ROAD
FUTURE HIGHWAY
170

ROANOKE ROAD (ASPHALT)

CONCRETE
HEADWALL

CONCRETE
HEADWALL

CREEK

CREEK

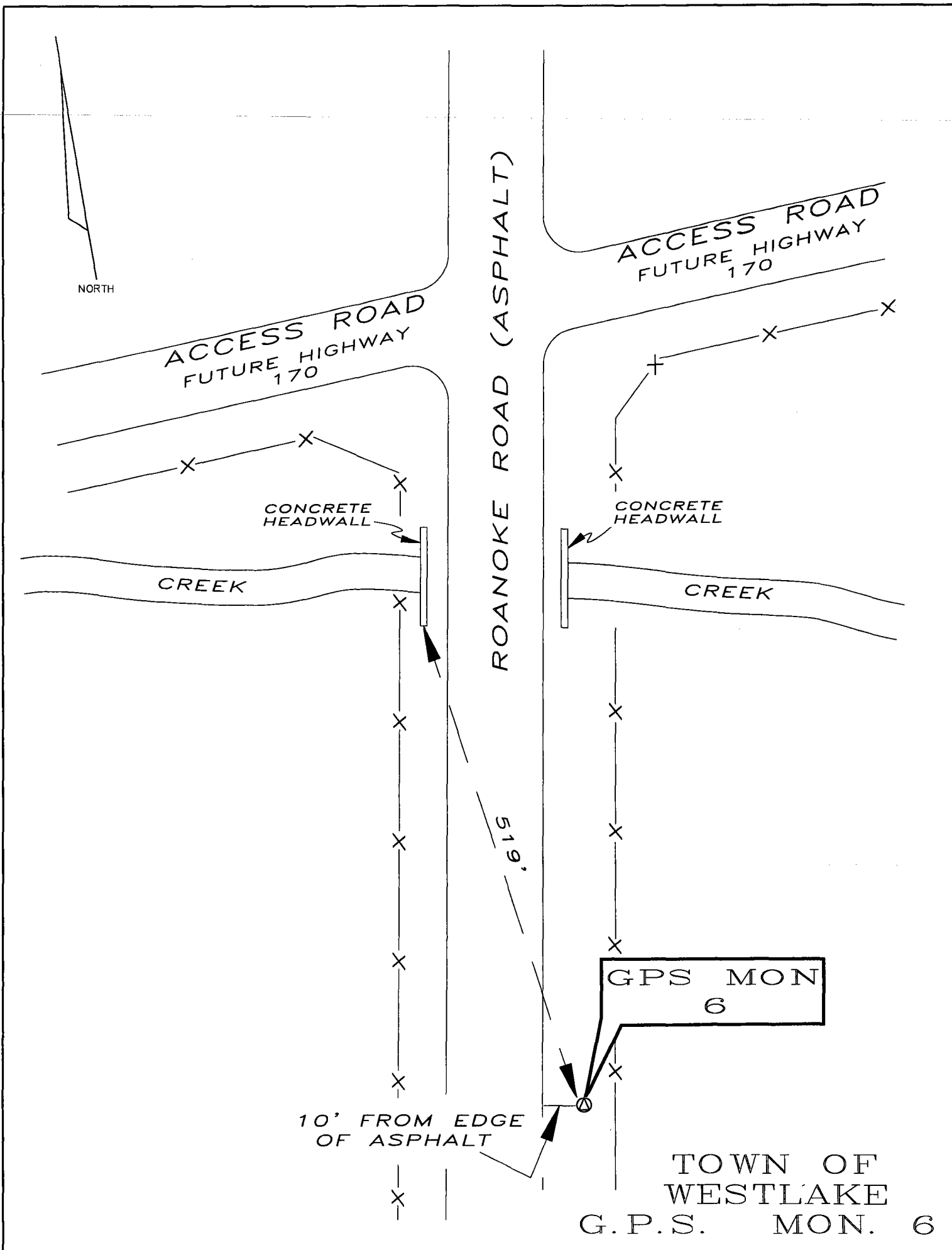
519'

GPS MON
6

10' FROM EDGE
OF ASPHALT

TOWN OF
WESTLAKE

G.P.S. MON. 6



**TOWN OF WESTLAKE
GPS MONUMENT NO. 7**

September 22, 1999

NAD 1983 (H.A.R.N. 1993) POSITION

Latitude: 32° 59' 35.06883" N
Longitude: 97° 13' 10.97107" W

TEXAS GRID COORDINATES - North Central Zone (4202)

Coordinates in Meters

Northing: 2147813.969
Easting: 719638.031

Coordinates in Feet

Northing: 7046619.66
Easting: 2361012.44

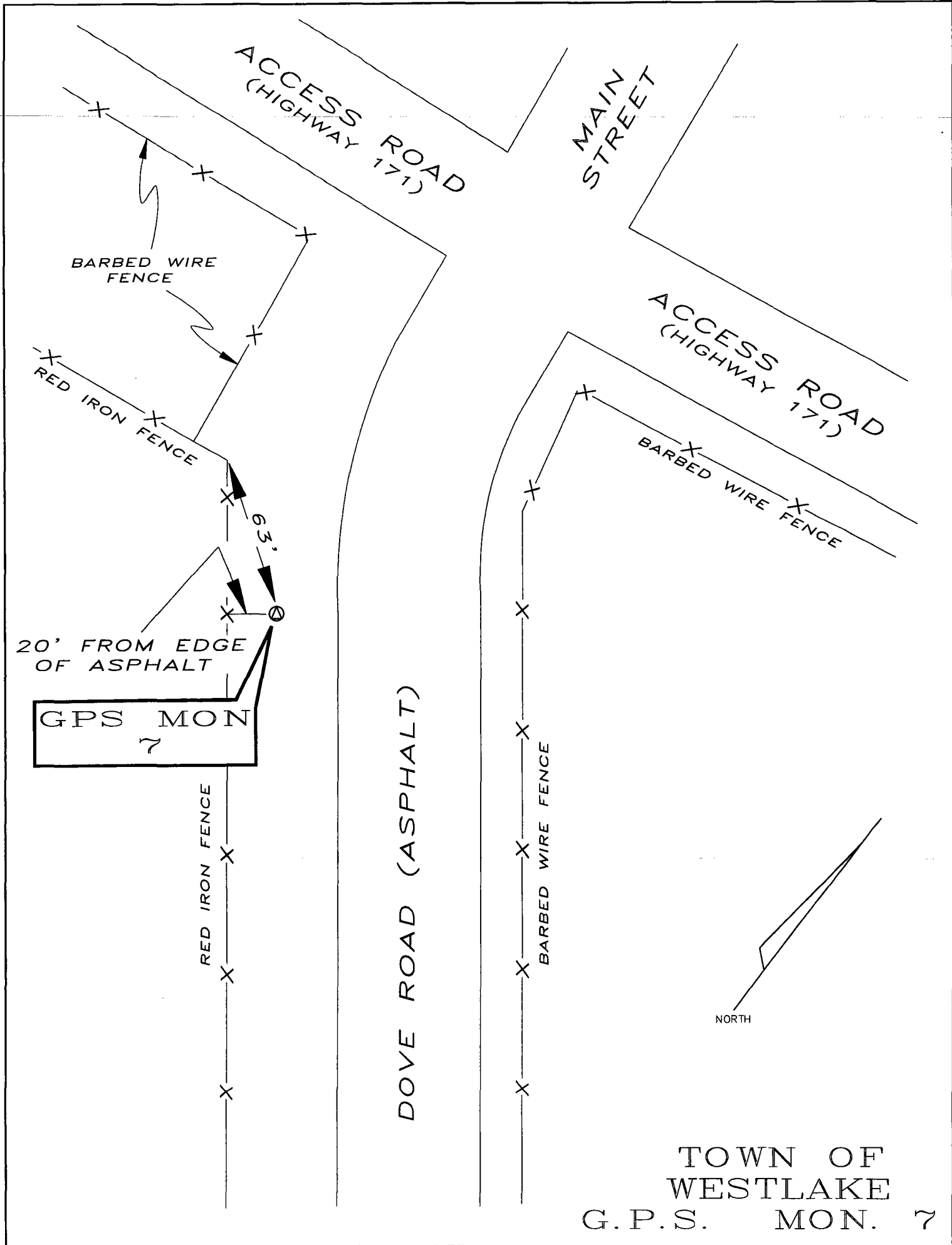
Convergence: 0° 41' 53.73863"
Scale Factor: 0.999873142

Vertical Datum N.A.V.D. 1988

Elevation in Feet: 626.27
Elevation in Meters: 190.889
Ellipsoidal Height in Meters: 163.437
Geoidal Height in Meters: 27.452

Station Description:

The Station is a Top Security rod monument with 3 1/4" aluminum cap stamped "TOWN OF WESTLAKE GPS 7" set in well with an aluminum access cover set flush with ground.



TOWN OF WESTLAKE
G.P.S. MON. 7

**TOWN OF WESTLAKE
GPS MONUMENT NO. 8**

September 22, 1999

NAD 1983 (H.A.R.N. 1993) POSITION

Latitude: 32° 59' 7.33187" N
Longitude: 97° 12' 40.24646" W

TEXAS GRID COORDINATES - North Central Zone (4202)

Coordinates in Meters

Northing: 2146969.408
Easting: 720446.001

Coordinates in Feet

Northing: 7043848.80
Easting: 2363663.25

Convergence: 0° 42' 10.49566"
Scale Factor: 0.999873288

Vertical Datum N.A.V.D. 1988

Elevation in Feet: 686.70
Elevation in Meters: 209.307
Ellipsoidal Height in Meters: 181.867
Geoidal Height in Meters: 27.440

Station Description:

The Station is a Top Security rod monument with 3 1/4" aluminum cap stamped "TOWN OF WESTLAKE GPS 8" set in well with an aluminum access cover set flush with ground.



GPS MON
8

RED IRON FENCE

OTTINGER ROAD

20' FROM EDGE OF ASPHALT

(ASPHALT)

RED IRON FENCE

(CROSS STREET)
MAHOETA BOONE TRAIL

±1800 FT. OR ± .35 MILES
APPROXIMATELY

TOWN OF
WESTLAKE
G.P.S. MON. 8

**TOWN OF WESTLAKE
GPS MONUMENT NO. 9**

September 22, 1999

NAD 1983 (H.A.R.N. 1993) POSITION

Latitude: 32° 58' 41.42054" N
Longitude: 97° 12' 8.98508" W

TEXAS GRID COORDINATES - North Central Zone (4202)

Coordinates in Meters

Northing: 2146181.316
Easting: 721267.349

Coordinates in Feet

Northing: 7041263.20
Easting: 2366357.96

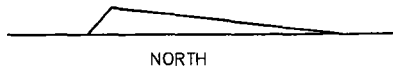
Convergence: 0° 42' 27.54544"
Scale Factor: 0.999873440

Vertical Datum N.A.V.D. 1988

Elevation in Feet: 678.40
Elevation in Meters: 206.777
Ellipsoidal Height in Meters: 179.352
Geoidal Height in Meters: 27.425

Station Description:

The Station is a Top Security rod monument with 3 1/4" aluminum cap stamped "TOWN OF WESTLAKE GPS 9" set in well with an aluminum access cover set flush with ground.



PEARSON LANE
(ASPHALT)

DOVE ROAD (ASPHALT)

GPS MON
9

113'

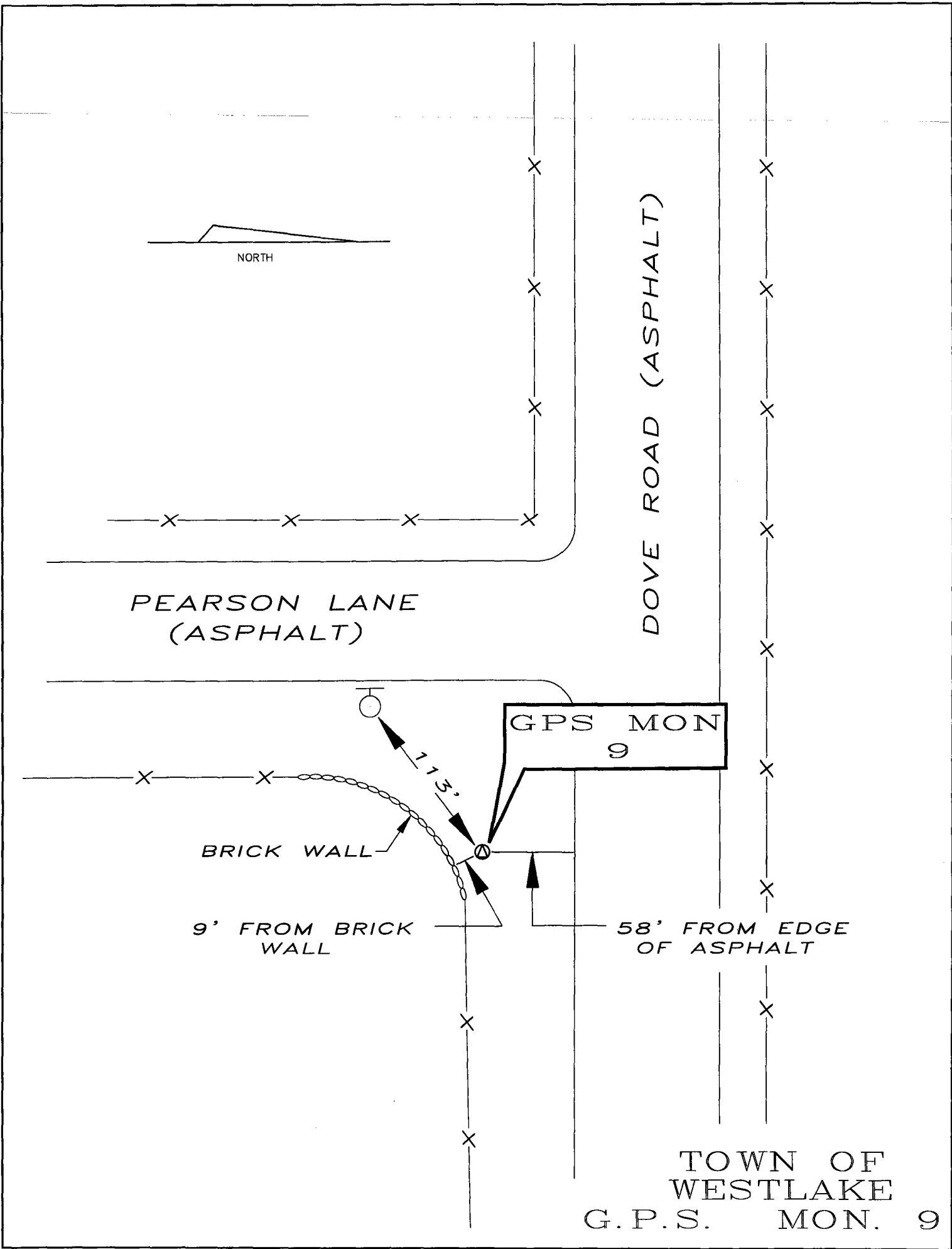
BRICK WALL

9' FROM BRICK
WALL

58' FROM EDGE
OF ASPHALT

TOWN OF
WESTLAKE

G.P.S. MON. 9



**TOWN OF WESTLAKE
GPS MONUMENT NO. 10**

September 22, 1999

NAD 1983 (H.A.R.N. 1993) POSITION

Latitude: 32° 59' 19.86020" N
Longitude: 97° 11' 5.65229" W

TEXAS GRID COORDINATES - North Central Zone (4202)

Coordinates in Meters

Northing: 2147385.719
Easting: 722896.667

Coordinates in Feet

Northing: 7045214.65
Easting: 2371703.48

Convergence: 0° 43' 2.08679"
Scale Factor: 0.999873220

Vertical Datum N.A.V.D. 1988

Elevation in Feet: 656.67
Elevation in Meters: 200.153
Ellipsoidal Height in Meters: 172.773
Geoidal Height in Meters: 27.380

Station Description:

The Station is a Top Security rod monument with 3 1/4" aluminum cap stamped "TOWN OF WESTLAKE GPS 10" set in well with an aluminum access cover set flush with ground.

ACCESS ROAD
(HIGHWAY 114 WEST)

NORTH

ACCESS ROAD
(HIGHWAY 114 WEST)

ACCESS ROAD
(HIGHWAY 114 WEST)

PRECINCT LINE ROAD
(ASPHALT)

X—X—X
BARBED WIRE FENCE

POWER POLE

GPS MON
10

4' FROM FENCE

BARBED WIRE FENCE

74'

WOOD POST

TOWN OF
WESTLAKE

G.P.S. MON. 10

